

| Version  | Type |
|--|------|
| Unidirectional in line with female-female thread                     | VX52 |
| Bi-directional in line with female-female thread                     | VX53 |
| Hexagonal screw adjustment   | VX15 |
| For cylinder, swivel with screwdriver adjustment and push-in fitting | VX18 |



Series of stainless steel flow controls available either for in line applications and for direct connection to cylinders to control the translation velocity.

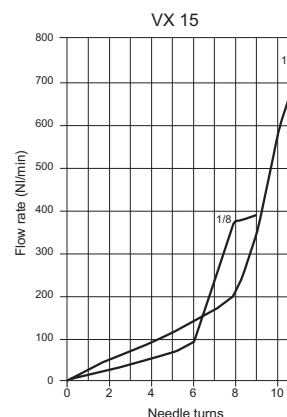
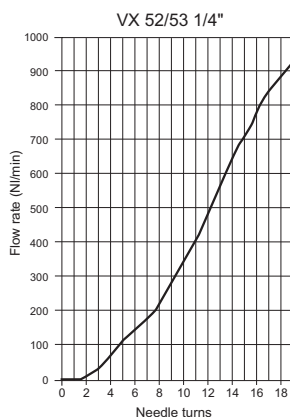
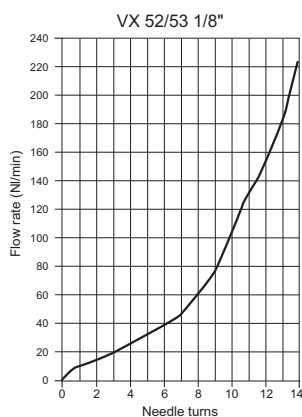
The in line regulators are available for control in one way (unidirectional) or in both ways (bi-directional).

The regulators for cylinders can be unidirectional with outlet adjustment from the cylinder ( C ) or with inlet adjustment to the cylinder ( V ), and in both sides ( B ).

For standard items, codes and dimensions see tables at page 5.185.2.

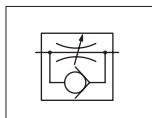
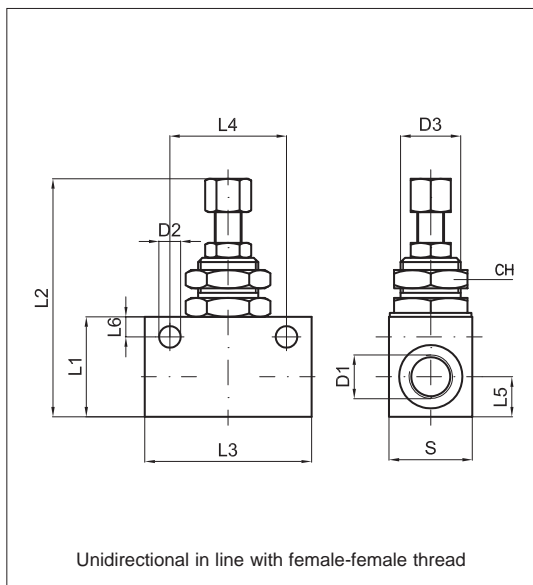
For the coupling of the screw adjustment type VX15 with stainless steel single banjo, see banjo type RX35 at page 5.150.5

### Flow diagrams

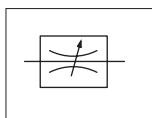
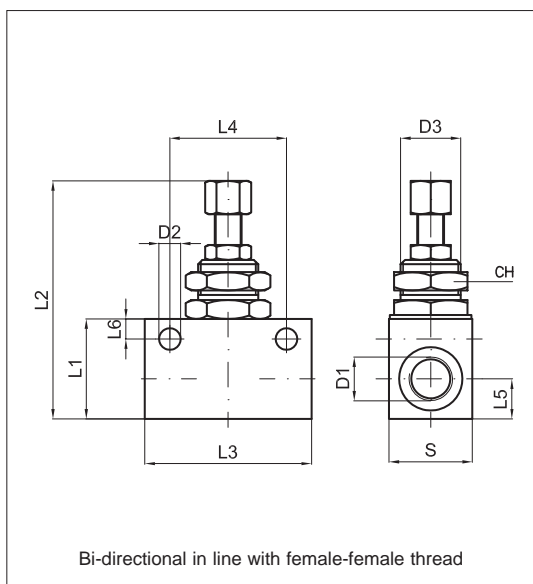


### Technical data

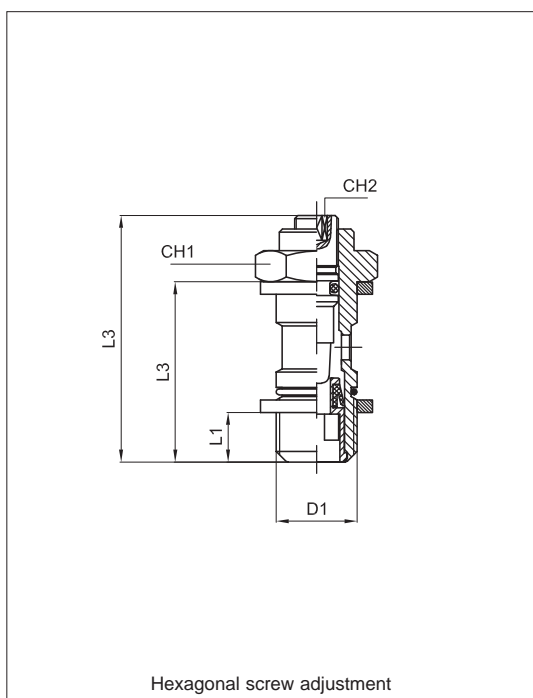
|                   |   |
|-------------------|---|
| Fluid             | Compressed filtered air with or without lubrication   |
| Pressure range    | 0,5 ÷ 10 bar  |
| Temperature range | -20 °C ÷ 150 °C   |
| Threads           | UNI - ISO 228   |
| Materials         | Body: Stainless Steel AISI 316 L<br>Adjustment group: Stainless steel AISI 316 L<br>Seal: FKM<br>Washer: PTFE |



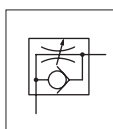
| Code   | Item       | D <sub>1</sub> | D <sub>2</sub> | D <sub>3</sub> | L <sub>1</sub> | L <sub>2</sub><br>max | L <sub>3</sub> | L <sub>4</sub> | L <sub>5</sub> | S  | CH | Weight<br>gr |
|--------|------------|----------------|----------------|----------------|----------------|-----------------------|----------------|----------------|----------------|----|----|--------------|
| 030155 | VX52 18 18 | 1/8"           | 4,5            | 12x0,75        | 21             | 56                    | 34             | 24             | 8              | 16 | 15 | 50           |
| 030156 | VX52 14 14 | 1/4"           | 6,5            | 18x1,5         | 30             | 75                    | 50             | 35             | 12             | 25 | 22 | 160          |



| Code   | Item       | D <sub>1</sub> | D <sub>2</sub> | D <sub>3</sub> | L <sub>1</sub> | L <sub>2</sub><br>max | L <sub>3</sub> | L <sub>4</sub> | L <sub>5</sub> | S  | CH | Weight<br>gr |
|--------|------------|----------------|----------------|----------------|----------------|-----------------------|----------------|----------------|----------------|----|----|--------------|
| 030157 | VX53 18 18 | 1/8"           | 4,5            | 12x0,75        | 21             | 56                    | 34             | 24             | 8              | 16 | 15 | 50           |
| 030158 | VX53 14 14 | 1/4"           | 6,5            | 18x1,5         | 30             | 75                    | 50             | 35             | 12             | 25 | 22 | 160          |



For cylinder

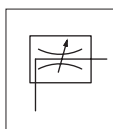


| Code   | Item        | D <sub>1</sub> | L <sub>1</sub> | L <sub>2</sub> | L <sub>3</sub><br>max | CH <sub>1</sub> | CH <sub>2</sub> | Weight<br>gr |
|--------|-------------|----------------|----------------|----------------|-----------------------|-----------------|-----------------|--------------|
| 024035 | VX15 00 18C | 1/8"           | 5,5            | 25             | 36                    | 14              | 2,5             | 16           |
| 024036 | VX15 00 14C | 1/4"           | 6,5            | 27,5           | 42                    | 17              | 3               | 30           |

For banjo push-in fittings series RX

see page 5.150.5.

Bi directional

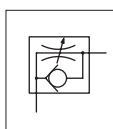


| Code   | Item        | D <sub>1</sub> | L <sub>1</sub> | L <sub>2</sub> | L <sub>3</sub><br>max | CH <sub>1</sub> | CH <sub>2</sub> | Weight<br>gr |
|--------|-------------|----------------|----------------|----------------|-----------------------|-----------------|-----------------|--------------|
| 024037 | VX15 00 18B | 1/8"           | 5,5            | 25             | 36                    | 14              | 2,5             | 16           |
| 024038 | VX15 00 14B | 1/4"           | 6,5            | 27,5           | 42                    | 17              | 3               | 30           |

For banjo push-in fittings series RX

see page 5.150.5.

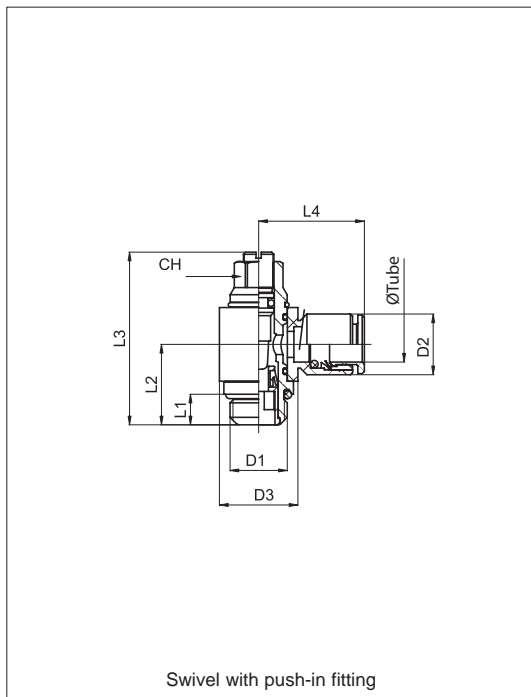
For valve



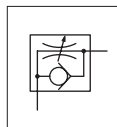
| Code   | Item        | D <sub>1</sub> | L <sub>1</sub> | L <sub>2</sub> | L <sub>3</sub><br>max | CH <sub>1</sub> | CH <sub>2</sub> | Weight<br>gr |
|--------|-------------|----------------|----------------|----------------|-----------------------|-----------------|-----------------|--------------|
| 024039 | VX15 00 18V | 1/8"           | 5,5            | 25             | 36                    | 14              | 2,5             | 16           |
| 024040 | VX15 00 14V | 1/4"           | 6,5            | 27,5           | 42                    | 17              | 3               | 30           |

For banjo push-in fittings series RX

see page 5.150.5.

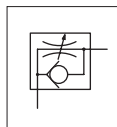


### For cylinder



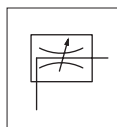
| Code   | Item      | Tube<br>ø | D1   | D2 | L1  | L2   | L3<br>max | L4   | CH | Weight<br>gr |
|--------|-----------|-----------|------|----|-----|------|-----------|------|----|--------------|
| 024232 | VX180418C | 4         | 1/8" | 9  | 5   | 15.5 | 32        | 19,5 | 9  | 29           |
| 024233 | VX180618C | 6         | 1/8" | 12 | 5   | 15.5 | 32        | 22   | 9  | 27           |
| 024234 | VX180614C | 6         | 1/4" | 12 | 6.5 | 17.5 | 40        | 23,5 | 10 | 49           |
| 024235 | VX180818C | 8         | 1/8" | 14 | 5   | 15.5 | 32        | 22,5 | 9  | 31           |
| 024236 | VX180814C | 8         | 1/4" | 14 | 6.5 | 17.5 | 40        | 24   | 10 | 49           |
| 024237 | VX181014C | 10        | 1/4" | 16 | 6.5 | 17.5 | 40        | 26,5 | 10 | 53           |
| 024238 | VX181038C | 10        | 3/8" | 16 | 9   | 22   | 52        | 28   | 14 | 86           |

### For valves



| Code   | Item      | Tube<br>ø | D1   | D2 | L1  | L2   | L3<br>max | L4   | CH | Weight<br>gr |
|--------|-----------|-----------|------|----|-----|------|-----------|------|----|--------------|
| 024239 | VX180418V | 4         | 1/8" | 9  | 5   | 15.5 | 32        | 19,5 | 9  | 29           |
| 024240 | VX180618V | 6         | 1/8" | 12 | 5   | 15.5 | 32        | 22   | 9  | 27           |
| 024241 | VX180614V | 6         | 1/4" | 12 | 6.5 | 17.5 | 40        | 23,5 | 10 | 49           |
| 024242 | VX180818V | 8         | 1/8" | 14 | 5   | 15.5 | 32        | 22,5 | 9  | 31           |
| 024243 | VX180814V | 8         | 1/4" | 14 | 6.5 | 17.5 | 40        | 24   | 10 | 49           |
| 024244 | VX181014V | 10        | 1/4" | 16 | 6.5 | 17.5 | 40        | 26,5 | 10 | 53           |
| 024245 | VX181038V | 10        | 3/8" | 16 | 9   | 22   | 52        | 28   | 14 | 86           |

### Bi directional



| Code   | Item      | Tube<br>ø | D1   | D2 | L1  | L2   | L3<br>max | L4   | CH | Weight<br>gr |
|--------|-----------|-----------|------|----|-----|------|-----------|------|----|--------------|
| 024246 | VX180418B | 4         | 1/8" | 9  | 5   | 15.5 | 32        | 19,5 | 9  | 29           |
| 024247 | VX180618B | 6         | 1/8" | 12 | 5   | 15.5 | 32        | 22   | 9  | 27           |
| 024248 | VX180614B | 6         | 1/4" | 12 | 6.5 | 17.5 | 40        | 23,5 | 10 | 49           |
| 024249 | VX180818B | 8         | 1/8" | 14 | 5   | 15.5 | 32        | 22,5 | 9  | 31           |
| 024250 | VX180814B | 8         | 1/4" | 14 | 6.5 | 17.5 | 40        | 24   | 10 | 49           |
| 024251 | VX181014B | 10        | 1/4" | 16 | 6.5 | 17.5 | 40        | 26,5 | 10 | 53           |
| 024252 | VX181038B | 10        | 3/8" | 16 | 9   | 22   | 52        | 28   | 14 | 86           |

### Flow diagrams

