

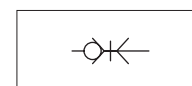
Quick-lock couplings

Series 26, DN 7,2 = 40 mm²

In Brass



Version	Type
Coupling with male metric thread DIN 2353	26KAAD
Coupling with male BSP, parallel thread ISO 228	26KAAW
Coupling with female metric thread DIN 13	26KAIM
Coupling with female BSP, parallel thread ISO 228	26KAIW
Coupling with hose adapter	26KATF
Coupling with rapid fitting	26KAKO
Coupling with bulkhead hose adapter	26KATS
Coupling with rapid fitting and anti-deflection spring	26KAKK
Plug with hose adapter	26SFTF
Plug with rapid fitting	26SFKO
Plug with bulkhead hose adapter	26SFTS
Plug with rapid fitting and anti-deflection spring	26SFKK
Plug with male metric thread DIN 2353	26SFAD
Plug with male BSP, parallel thread ISO 228	26SFAW
Plug with female metric thread DIN 13	26SFIM
Plug with female BSP, parallel thread ISO 228	26SFIW



Series of quick-lock couplings single shut off (only on the coupling), standard in brass (not nickel plated).

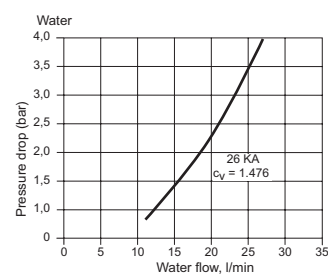
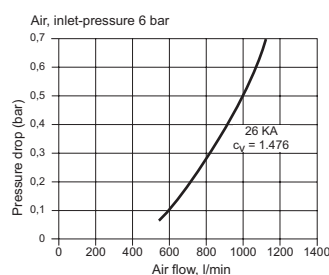
The quick-lock couplings series 26 can be used in various fields and for this it is considered universal.

The connection tightness between the coupling and the plug is guaranteed by a series of spheres and this allows a longer life time even when the connections and the disconnections are frequent.

For standard items, codes and dimensions see tables from page 4.45.22.

On request these couplings can be supplied (special executions):

- Double shut off
- With coupler body completely in stainless steel AISI 303 or AISI 316.
- With special seals (FKM or EPDM).
- Nickel plated (standard or chemical nickel plating)
- Without shut off valves

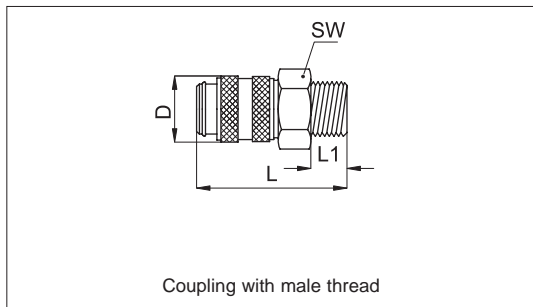
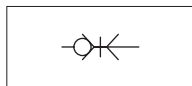


Technical data									
Fluid	Compressed air, water, non-aggressive fluids								
Pressure range	35 bar (Vacuum resistance: 750 mm. Hg)								
Temperature range	-20 °C ÷ 100 °C								
Parallel threads	UNI - ISO 228/1 (BSP)								
Metric threads	DIN 13 - DIN 2353								
Materials	<table border="0"> <tr> <td>Coupler body, valve, releasing sleeve:</td> <td>Brass OT58</td> </tr> <tr> <td>Springs and elastic ring:</td> <td>Stainless steel AISI 301</td> </tr> <tr> <td>Balls:</td> <td>Stainless steel AISI 420</td> </tr> <tr> <td>Seals:</td> <td>Nitrile rubber (NBR)</td> </tr> </table>	Coupler body, valve, releasing sleeve:	Brass OT58	Springs and elastic ring:	Stainless steel AISI 301	Balls:	Stainless steel AISI 420	Seals:	Nitrile rubber (NBR)
Coupler body, valve, releasing sleeve:	Brass OT58								
Springs and elastic ring:	Stainless steel AISI 301								
Balls:	Stainless steel AISI 420								
Seals:	Nitrile rubber (NBR)								

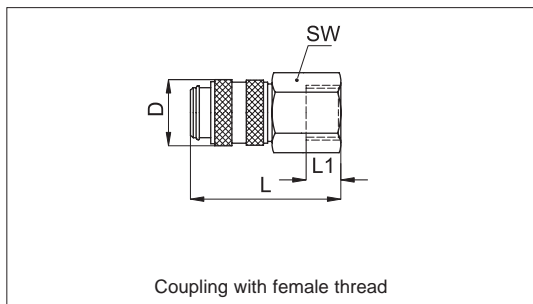
Quick-lock couplings

Series 26, DN 7,2 = 40 mm²

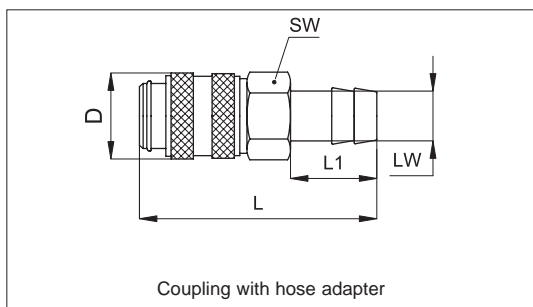
In Brass



Code	Item	Thread	SW	L	D	L ₁
570100	26KA AW10 MPX	1/8"	22	43	25	9
570006	26KA AW13 MPX	1/4"	22	41	25	9
570101	26KA AW17 MPX	3/8"	22	41	25	9
570102	26KA AW21 MPX	1/2"	22	44	25	12
570104	26KA AD14 MPX	M14x1,5	22	42	25	10
570105	26KA AD16 MPX	M16x1,5	22	43	25	11
570106	26KA AD18 MPX	M18x1,5	22	43	25	11

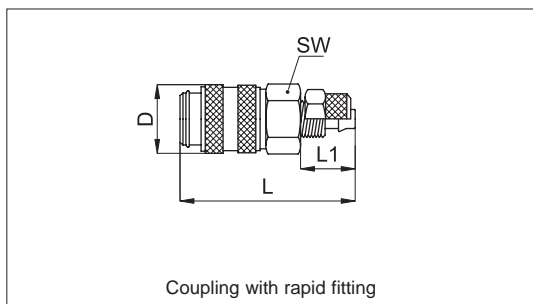


Code	Item	Thread	SW	L	D	L ₁
570107	26KA IW13 MPX	1/4"	22	41	25	9
570108	26KA IW17 MPX	3/8"	22	41	25	9
570109	26KA IW21 MPX	1/2"	24	44	25	12
570110	26KA IM14 MPX	M14x1,5	22	41	25	9
570111	26KA IM16 MPX	M16x1,5	22	41	25	9
570112	26KA IM18 MPX	M18x1,5	22	41	25	9



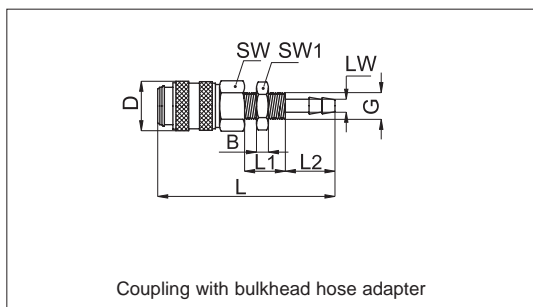
Code	Item	LW	SW	L	D	L ₁
570113	26KA TF06 MPX	6	21	58	25	25
570114	26KA TF08 MPX	8	21	58	25	25
570115	26KA TF09 MPX	9	21	58	25	25
570116	26KA TF10 MPX	10	21	58	25	25
570117	26KA TF13 MPX	13	21	58	25	25
570118	26KA TP06 MPX	6	21	58	25	20,5
570119	26KA TP10 MPX	10	21	58	25	24
570120	26KA TP13 MPX	13	21	58	25	28

LW = Tube internal Ø



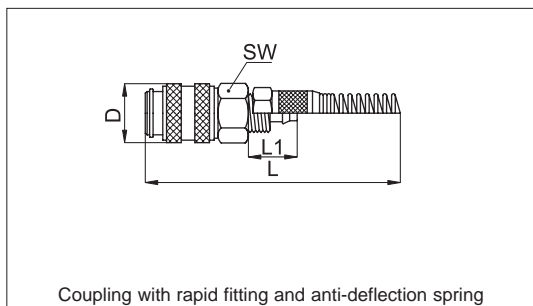
Code	Item	Tube Ø	SW	L	D	L ₁
570270	26KA KO06 MPX	6	21	46	25	11
570121	26KA KO08 MPX	8	21	46	25	13
570122	26KA KO10 MPX	10	21	49	25	17
570123	26KA KO12 MPX	12	21	49	25	17

Tube Ø= Tube external Ø



Code	Item	LW	SW	L	D	L ₁	L ₂	SW ₁	G
572378	26KA TS06 MPX	6	21	60	25	25	25	14	M12x1
572379	26KA TS08 MPX	8	21	63	25	25	25	17	M16x1
572380	26KA TS10 MPX	10	21	72	25	25	25	17	M16x1

LW = Tube internal Ø



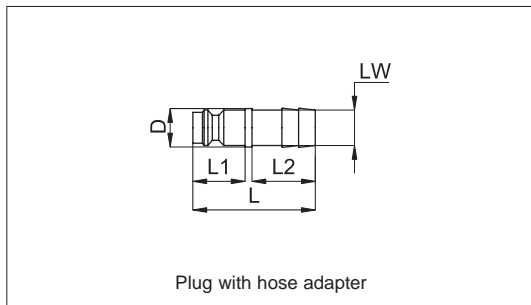
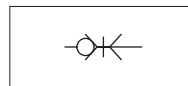
Code	Item	Tube Ø	SW	L	D	L ₁
570124	26KA KK08 MPX	8	21	135	27	13
570125	26KA KK10 MPX	10	21	150	27	17
570126	26KA KK12 MPX	12	21	150	27	17

Tube Ø= Tube external Ø

Quick-lock couplings

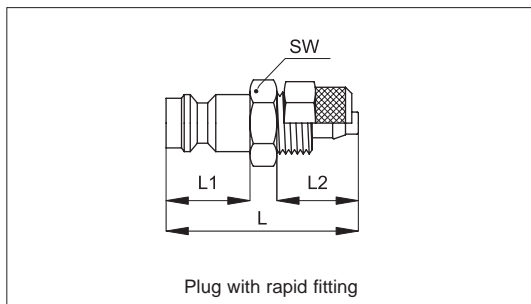
Series 26, DN 7,2 = 40 mm²

In Brass



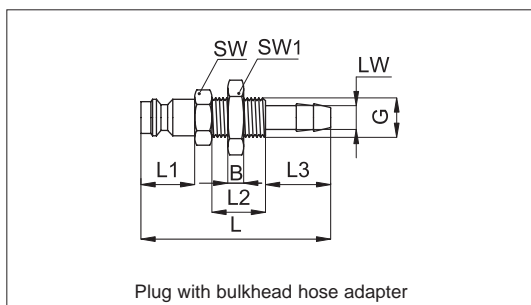
Code	Item	LW	L	D	L ₁	L ₂
570127	26SF TF04 MXX	4	48	9	20	25
570128	26SF TF06 MXX	6	48	9	20	25
570129	26SF TF08 MXX	8	48	9	20	25
570130	26SF TF09 MXX	9	48	10	20	25
570131	26SF TF10 MXX	10	48	12	20	25
570132	26SF TF13 MXX	13	48	15	20	25

LW = Tube internal Ø



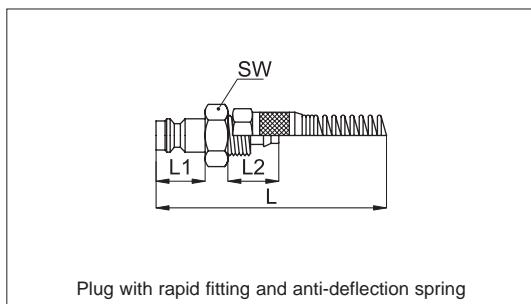
Code	Item	Tube Ø	SW	L	L ₁	L ₂
570136	26SF KO06 MXX	6	14	34	20	13
570137	26SF KO08 MXX	8	17	34	20	13
570138	26SF KO10 MXX	10	17	42	20	17
570139	26SF KO12 MXX	12	19	42	20	17

Tube Ø= Tube external Ø



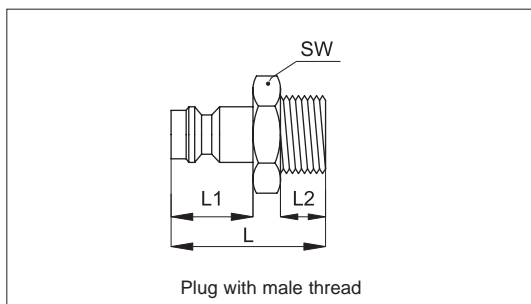
Code	Item	LW	SW	L	L ₁	L ₂	L ₃	SW ₁	B	G
570140	26SF TS06 MXX	6	14	64	20	14	25	14	4	M12x1
570141	26SF TS08 MXX	8	17	64	20	14	25	17	4	M12x1
570142	26SF TS10 MXX	10	17	64	20	14	25	17	4	M14x1

LW = Tube internal Ø

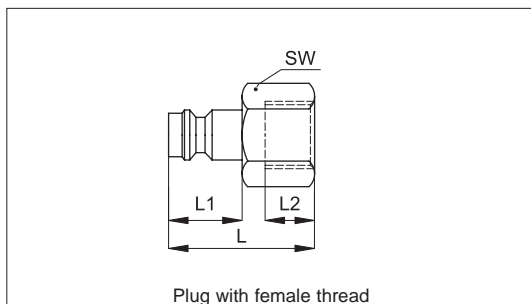


Code	Item	Tube Ø	SW	L	L ₁	L ₂
570143	26SF KK06 MXX	6	14	120	20	13
570144	26SF KK08 MXX	8	17	120	20	13
570145	26SF KK10 MXX	10	17	140	20	17
570146	26KA KK12 MXX	12	19	140	20	17

Tube Ø= Tube external Ø



Code	Item	Thread	SW	L	L ₁	L ₂
570147	26SF AW10 MXX	1/8"	14	31	20	7
570148	26SF AW13 MXX	1/4"	17	33	20	9
570149	26SF AW17 MXX	3/8"	19	33	20	9
570150	26SF AW21 MXX	1/2"	22	38	20	12
570151	26SF AD14 MXX	M14x1,5	17	35	20	10
570152	26SF AD16 MXX	M16x1,5	19	36	20	11
570153	26SF AD18 MXX	M18x1,5	22	37	20	11



Code	Item	Thread	SW	L	L ₁	L ₂
570154	26SF IW10 MXX	1/8"	14	30	20	7
570155	26SF IW13 MXX	1/4"	17	33	20	10
570156	26SF IW17 MXX	3/8"	19	33	20	10
570157	26SF IW21 MXX	1/2"	24	36	20	12
570158	26SF IM14 MXX	M14x1,5	17	33	20	10
570159	26SF IM16 MXX	M16x1,5	19	33	20	10
570160	26SF IM18 MXX	M18x1,5	22	36	20	13

4