

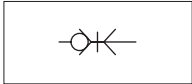
# Quick-lock couplings

## Series 20, DN 2,7 = 6 mm<sup>2</sup>

In Brass



Version	Type
Coupling with male metric thread DIN 13	20KAAM
Coupling with male BSP parallel thread ISO 228	20KAAW
Coupling with female metric thread DIN 13	20KAIM
Coupling with female BSP parallel thread ISO 228	20KAIW
Coupling with hose adapter	20KATF
Coupling with rapid fitting	20KAKO
Coupling with bulkhead rapid fitting	20KAKS
Coupling with bulkhead hose adapter	20KATS
Plug with hose adapter	20SFTF
Plug with rapid fitting	20SFKO
Plug with bulkhead rapid fitting	20SFKS
Plug with bulkhead hose adapter	20SFTS
Plug with male metric DIN 13	20SFAM
Plug with male BSP, parallel thread ISO 228	20SFAW
Plug with female metric DIN 13	20SFIM
Plug with female BSP, parallel thread ISO 228	20SFIW



Series of quick-lock couplings single shut off (only on the coupling), standard in brass (not nickel plated).

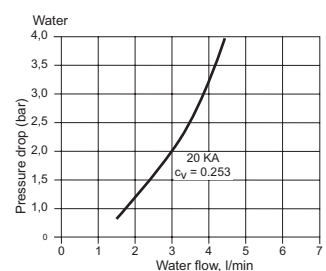
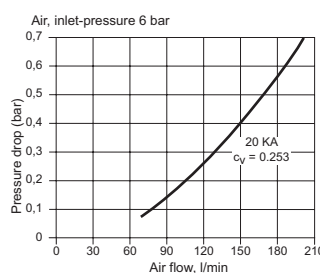
The quick-lock couplings series 20, whose dimensions are very small, can be used in various fields (chemical, medical, etc.).

The connection tightness between the coupling and the plug is guaranteed by a series of spheres and this allows a longer life time even when the connections and the disconnections are frequent.

For standard items, codes and dimensions see tables from page 4.45.2.

On request these couplings can be supplied (special executions):

- Double shut off
- With coupler body completely in stainless steel AISI 303 or AISI 316.
- With special seals (FKM or EPDM).
- Nickel plated (standard or chemical nickel plating)
- Without shut off valves

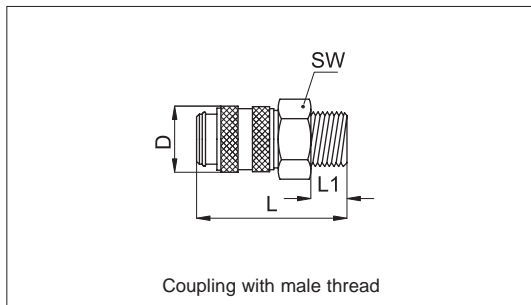
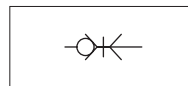


Technical data	
Fluid	Compressed air, water, non-aggressive fluids
Pressure range	35 bar (Vacuum resistance: 750 mm. Hg)
Temperature range	-20 °C ÷ 100 °C
Parallel threads	UNI - ISO 228/1 (BSP)
Metric threads	DIN 13
Materials	Coupler body, valve, releasing sleeve: Brass OT58 Springs and elastic ring: Stainless steel AISI 301 Balls: Stainless steel AISI 420 Seals: Nitrile rubber (NBR)

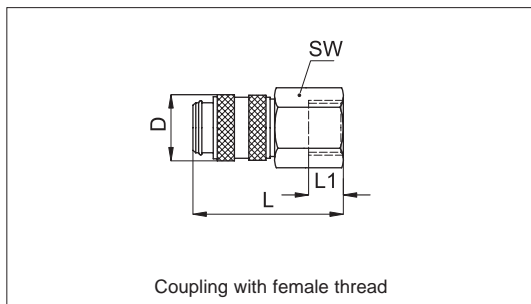
# Quick-lock couplings

## Series 20, DN 2,7 = 6 mm<sup>2</sup>

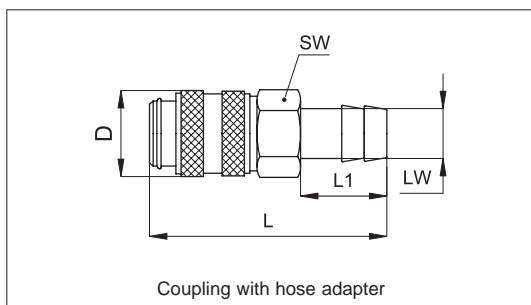
In Brass



Code	Item	Thread	SW	L	D	L <sub>1</sub>
570002	20KA AM05 MPX	M5	9	26	10	5
570015	20KA AW10 MPX	G 1/8"	11	28	10	7

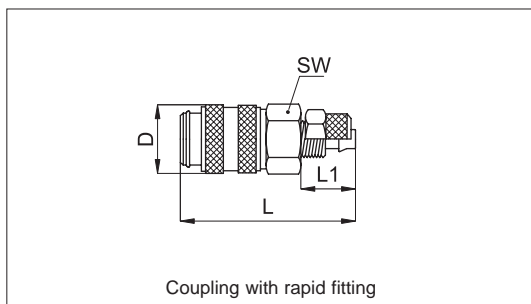


Code	Item	Thread	SW	L	D	L <sub>1</sub>
570016	20KA IM05 MPX	M5	9	26	10	5
570017	20KA IW10 MPX	G 1/8"	12	28	10	7



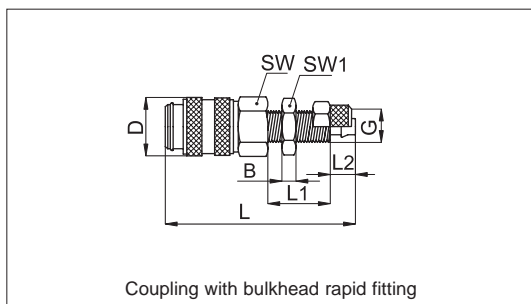
Code	Item	LW	SW	L	D	L <sub>1</sub>
570018	20KA TF03 MPX	3	12	35	10	13
570019	20KA TF04 MPX	4	12	35	10	13
570020	20KA TF05 MPX	5	12	35	10	13

LW = Tube internal Ø



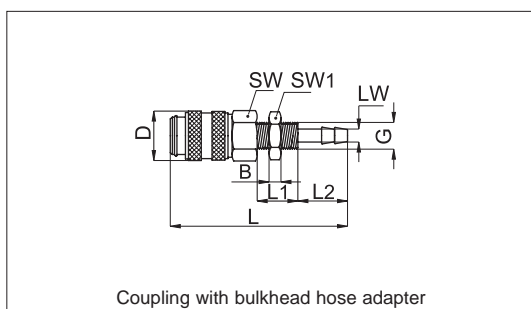
Code	Item	Tube Ø	SW	L	D	L <sub>1</sub>	G
570021	20KA KO04 MPX	4	12	34	10	12	M7x0,5
570022	20KA KO05 MPX	5	12	34	10	12	M7x0,5
570023	20KA KO06 MPX	6	12	34	10	12	M8x0,5

Tube Ø= Tube external Ø



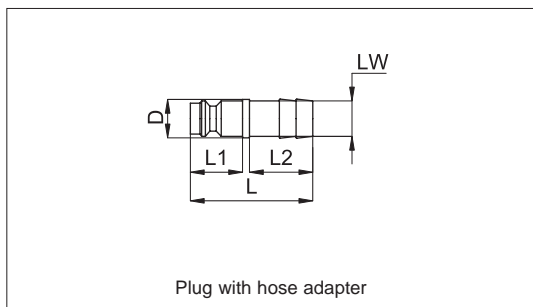
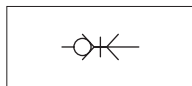
Code	Item	Tube Ø	SW	L	D	L <sub>1</sub>	L <sub>2</sub>	SW <sub>1</sub>	B	G
570024	20KA KS04 MPX	4	12	45	10	17	7	11	3	M7x0,5
570025	20KA KS05 MPX	5	12	45	10	17	7	11	3	M7x0,5
570026	20KA KS06 MPX	6	12	45	10	17	7	12	3,5	M8x0,5

Tube Ø= Tube external Ø



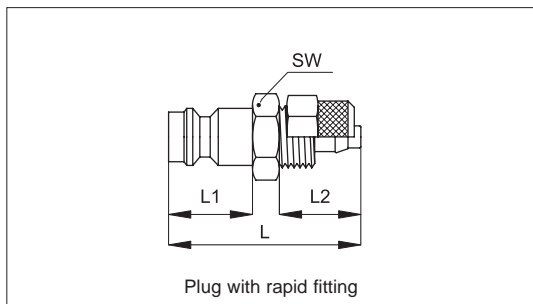
Code	Item	LW	SW	L	D	L <sub>1</sub>	L <sub>2</sub>	SW <sub>1</sub>	B	G
570027	20KA TS03 MPX	3	12	51	10	17	13	11	3	M7x0,5
570028	20KA TS04 MPX	4	12	51	10	17	13	11	3	M7x0,5

LW = Tube internal Ø



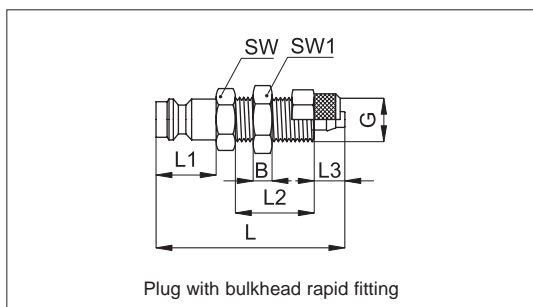
Code	Item	LW	L	D	L <sub>1</sub>	L <sub>2</sub>
570029	20SF TF03 MXX	3	24	7	10	13
570030	20SF TF04 MXX	4	24	7	10	13
570031	20SF TF05 MXX	5	24	9	8,5	12,5

LW = Tube internal Ø



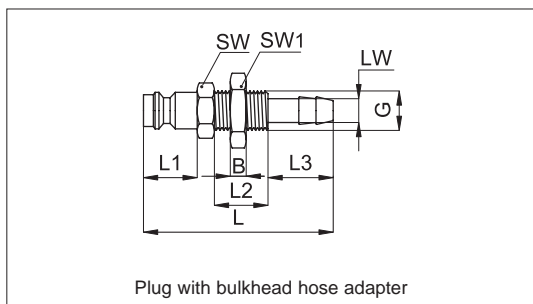
Code	Item	Tube Ø	SW	L	L <sub>1</sub>	L <sub>2</sub>
570003	20SF KO04 MXX	4	7	25	10	12
570032	20SF KO05 MXX	5	7	25	10	12
570033	20SF KO06 MXX	6	8	25	10	12

Tube Ø = Tube external Ø



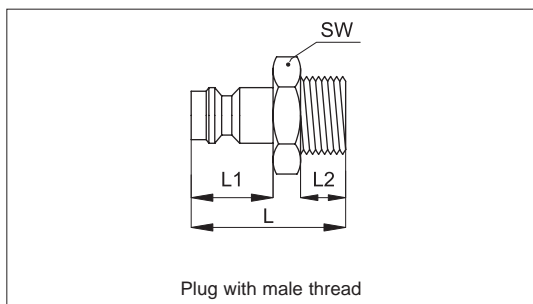
Code	Item	Tube Ø	SW	L	L <sub>1</sub>	L <sub>2</sub>	L <sub>3</sub>	SW <sub>1</sub>	B	G
570034	20SF KS04 MXX	4	11	38	10	17	7	11	3	M7x0,5
570035	20SF KS05 MXX	5	11	38	10	17	7	11	3	M7x0,5
570036	20SF KS06 MXX	6	12	38	10	17	7	12	3,5	M8x0,5

Tube Ø = Tube external Ø

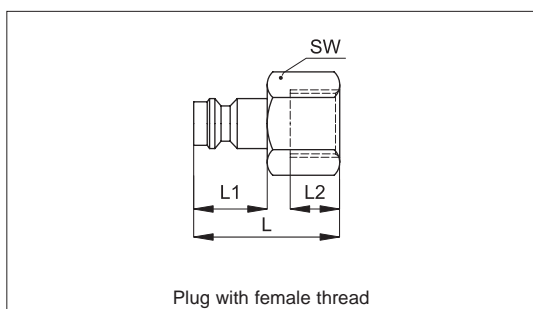


Code	Item	LW	SW	L	L <sub>1</sub>	L <sub>2</sub>	L <sub>3</sub>	SW <sub>1</sub>	B	G
570037	20SF TS03 MXX	3	11	44	10	17	13	11	3	M7x0,5
570038	20SF TS04 MXX	4	11	44	10	17	13	11	3	M7x0,5

LW = Tube internal Ø



Code	Item	Thread	SW	L	L <sub>1</sub>	L <sub>2</sub>
570039	20SF AM05 MXX	M5	7	18	10	5
570040	20SF AW10 MXX	G 1/8"	11	20	10	7



Code	Item	Thread	SW	L	L <sub>1</sub>	L <sub>2</sub>
570041	20SF IM05 MXX	M5	7	17	10	5
570042	20SF IW10 MXX	G 1/8"	12	19	10	7