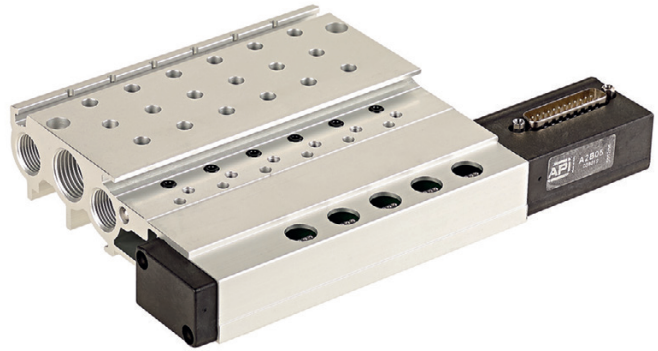


# Solenoid valves series A2

## Sub-bases, accessories, SUB-D connector



Standard executions		
Version	Code	Item
Base 4 positions (min.)	036011	A2B04
Base 5 positions	036012	A2B05
Base 6 positions	036013	A2B06
Base 7 positions	036014	A2B07
Base 8 positions	036015	A2B08
Base 9 positions	036016	A2B09
Base 10 positions	036017	A2B10
Base 11 positions	036018	A2B11
Base 12 positions	036019	A2B12



Version	A	B
Base 4 positions (min.)	203.5	127.5
Base 5 positions	223.5	147.5
Base 6 positions	243.5	167.5
Base 7 positions	263.5	187.5
Base 8 positions	283.5	207.5
Base 9 positions	303.5	227.5
Base 10 positions	323.5	247.5
Base 11 positions	343.5	267.5
Base 12 positions	363.5	287.5

Sub-bases with fix position for A2 series valves, with standard 25 poles SUB-D connector, can be mounted on DIN EN 50 035 guides.

On each base, one position on the opposite side of the SUB-D connector is dedicated to the module for the external piloting of the valves.

The main feeding of the valves ( 1 ) can be divided by applying an internal diaphragm, in case feeding with two different pressures should be required.

Likewise, the exhausts ( 3 – 5 ) can be divided with the suitable diaphragms.

The base is mainly composed by aluminium, anodized to grant last in time.

The covers in PBT glass charged, are sealed with an internal o-ring to protect the electrical circuit from external atmospheric agents.

For the external pilot modules

see page 2.105.5

For the feeding / exhausts diaphragms

see page 2.105.6

