

22 mm. directly operated solenoid valves

1/8" and 1/4", 3/2, normally closed, electrically operated



| Standard executions | | | |
|---|--------|------------------------------|----------|
| Version | Symbol | Code | Item |
| 1/8", 3/2 N.C., with bistable manual override | | 034226 | A1E130MD |
| 1/4", 3/2 N.C., with bistable manual override | | 034227 | A1E230MD |
| 1/8", 3/2 N.C., with bistable manual override Ex nA | | For code key see table below | |
| 1/4", 3/2 N.C., with bistable manual override Ex nA | | | |



Series of direct operated valves for mounting on the application (on cylinder or on rotary actuator, as shown in the examples at page 2.10.4).

For versions conforming to ATEX 2014/34/UE Directive, classification Ex nA... see page 2.10.3

For further ATEX classifications ask to our sales department.

Standard coils and connectors have to be ordered separately:
 For the coils typer ASA12... vedi pag. 2.200.1
 For connectors type A122... vedi pag. 2.210.20



On request, they can be supplied according to 2014/34/EU - ATEX

| Options | Suffix |
|-------------------------------------|--------|
| Low temperature seals (-25 ÷ +70°C) | BT |
| Seals FKM (-10°C ÷ +150°C) | V |

Code key for standard versions

| Series | Actuation | Size | Function |
|--------|---------------|----------------------|-------------|
| A1 | E= electrical | 1 = 1/8" 2 = 1/4" | 30 = 3/2 NC |

Code key for ATEX versions

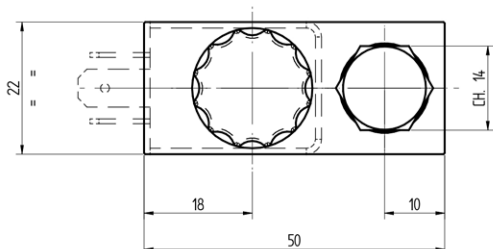
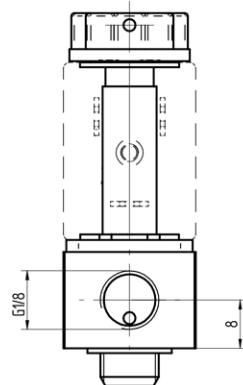
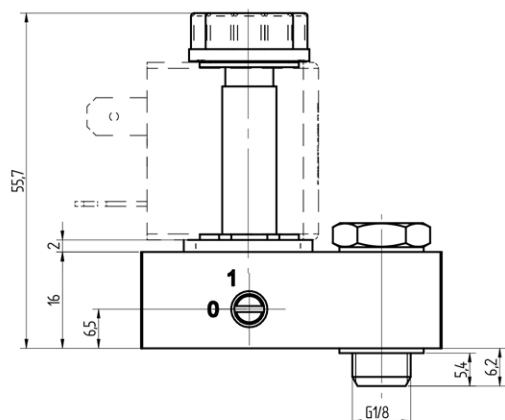
| Series | Actuation | Size | Function | Hazardous areas | Voltages | | |
|--|--------------------------------|----------------------|-------------|---|---|--|--------------------------------|
| A1 | E= electrical | 1 = 1/8" 2 = 1/4" | 30 = 3/2 NC | XX = II 3G Ex nA IIC T5 Gc X II 3D Ex tc IIIC T95°C Dc X | <table border="1"> <tr> <td>B = 12 VDC C = 24 VDC * F = 24 VAC *</td> <td>I = 110 VAC * O = 220 VAC *</td> </tr> </table> | B = 12 VDC C = 24 VDC * F = 24 VAC * | I = 110 VAC * O = 220 VAC * |
| B = 12 VDC C = 24 VDC * F = 24 VAC * | I = 110 VAC * O = 220 VAC * | | | | | | |
| * = Standard voltages | | | | | | | |

Technical data

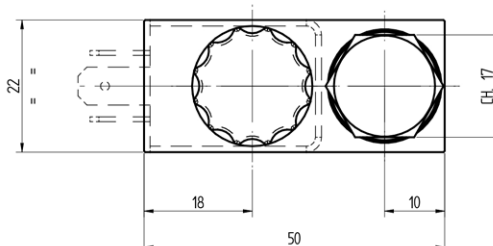
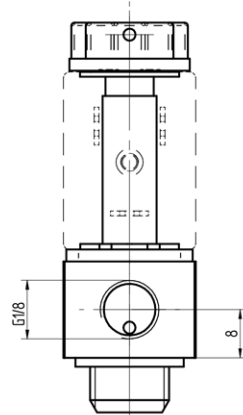
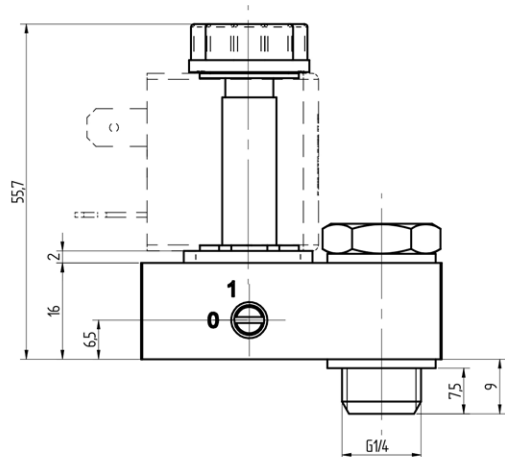
| | | | |
|-------------------|---|---------------------|--------------------|
| Fluid | Compressed filtered air, min. 5µm, with or without lubrication. | | |
| Pressure range | 0 ÷ 10 bar | | |
| Temperature range | -10°C ÷ +60°C (standard) | -10°C ÷ +150°C (V) | -25°C ÷ +70°C (BT) |
| Orifice | 1,2 mm. | | |
| Flow | 29 NI/min. at 6 bar ΔP 1 bar | | |
| Weight | 100 g. | | |
| Mounting | In any position | | |
| Materials | Base | Zinc alloy die cast | |
| | Tube | Brass | |
| | Coers | Steel AISI specific | |
| | Springs | Spring steel | |
| | Manual override | Nickel-plated brass | |
| | Locking nut | Plastic | |
| | Screws | Zinc plated steel | |



22 mm. directly operated solenoid valves
 1/8" and 1/4", 3/2, normally closed, electrically operated



| Version | Symbol | Code | Item |
|---|--------|--------|----------|
| 1/8", 3/2 N.C., with bistable manual override | | 034226 | A1E130MD |



| Version | Symbol | Code | Item |
|---|--------|--------|----------|
| 1/4", 3/2 N.C., with bistable manual override | | 034227 | A1E230MD |

Technical drawing of a 1/8 inch, 3/2 N.C. solenoid valve. The drawing includes a side view, a front view, and a cross-sectional view. Dimensions are provided in millimeters: side view shows a total height of 55.7, a mounting flange diameter of 16, a distance of 6.5 from the top to the coil, a coil diameter of 18, a total width of 50, a distance of 5.4 from the bottom to the coil, and a bottom connection diameter of 6.2. The front view shows a diameter of 6.8 and a height of 8. The cross-sectional view shows a diameter of 10 and a height of 22.

CE **II 3G Ex nA IIC T5 Gc X**
II 3D Ex tc IIIC T95°C Dc X

| Version | Symbol | Code | Item |
|---|--------|------|--------------|
| 1/8", 3/2 N.C., with bistable manual override | | | A1E130MDXX.. |

Technical drawing of a 1/4 inch, 3/2 N.C. solenoid valve. The drawing includes a side view, a front view, and a cross-sectional view. Dimensions are provided in millimeters: side view shows a total height of 55.7, a mounting flange diameter of 16, a distance of 6.5 from the top to the coil, a coil diameter of 18, a total width of 50, a distance of 7.5 from the bottom to the coil, and a bottom connection diameter of 9. The front view shows a diameter of 6.8 and a height of 8. The cross-sectional view shows a diameter of 10 and a height of 22.

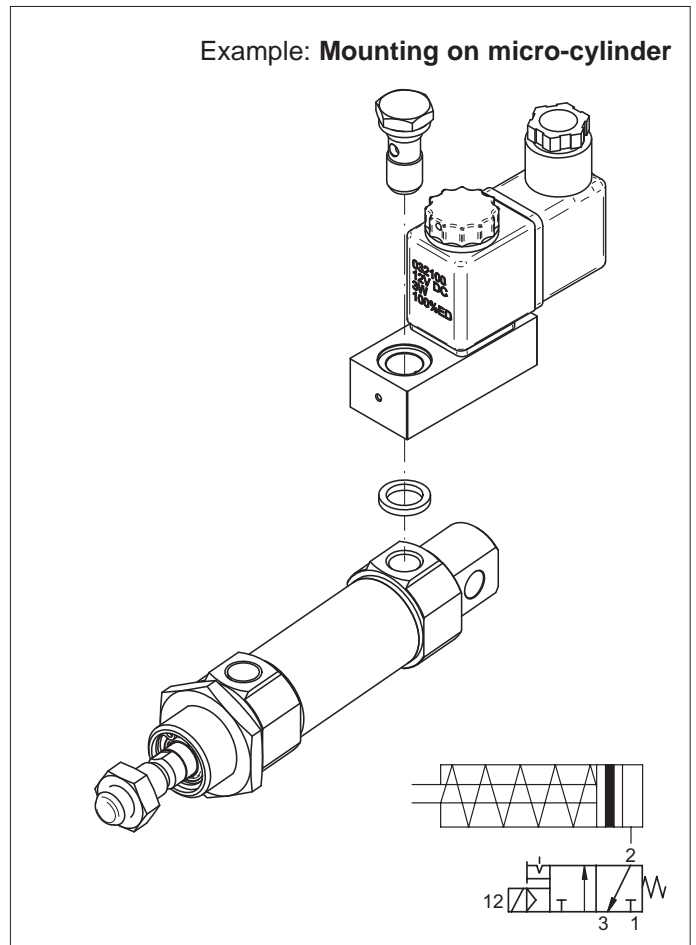
CE **II 3G Ex nA IIC T5 Gc X**
II 3D Ex tc IIIC T95°C Dc X

| Version | Symbol | Code | Item |
|---|--------|------|--------------|
| 1/4", 3/2 N.C., with bistable manual override | | | A1E230MDXX.. |

22 mm. directly operated solenoid valves 1/8" and 1/4", 3/2, normally closed, electrically operated



Example of application of the direct control solenoid valve 22 mm. series A1EMD on a single-acting microcylinder series MSM.
The valves of this series can be directly mounted on the cylinder's connection without the use of intermediate pipes.



Example of application of the direct control solenoid valve 22 mm. series A1EMD on a single-acting rotary actuator series AR..SE.
The valves of this series can be directly mounted on the actuator connection without the use of intermediate pipes or plates.

